



**ZANON PRESSURE EQUIPMENT S.R.L.**

---



# INTRODUCTION

The company's activity is designing and manufacturing of components for Oil and Gas, Petrochemical, Off shore, and Fertilizer Industry.

Zanon Pressure Equipment S.r.l. has been established in August 2019 by taking over the "Pressure Equipment" division of E. Zanon S.p.A., retaining the workshop, machineries, personnel, qualifications, certifications, licenses, know.how and experiences of the former E. Zanon S.p.A. (with more than 100 years of presence in the industry)

Zanon Pressure Equipment is 100% owned by Brembana & Rolle Group of Company (please refer to [www.brembanarolle.com](http://www.brembanarolle.com))

Zanon Pressure Equipment S.r.l. It is located in **Schio** 250 km from Milan and 100 km from Venice that represents our usual harbour.



*Location*



# QUALITY

We operate according to Quality Assurance System **ISO 9001:2015** since November 1990

Moreover we are certified :

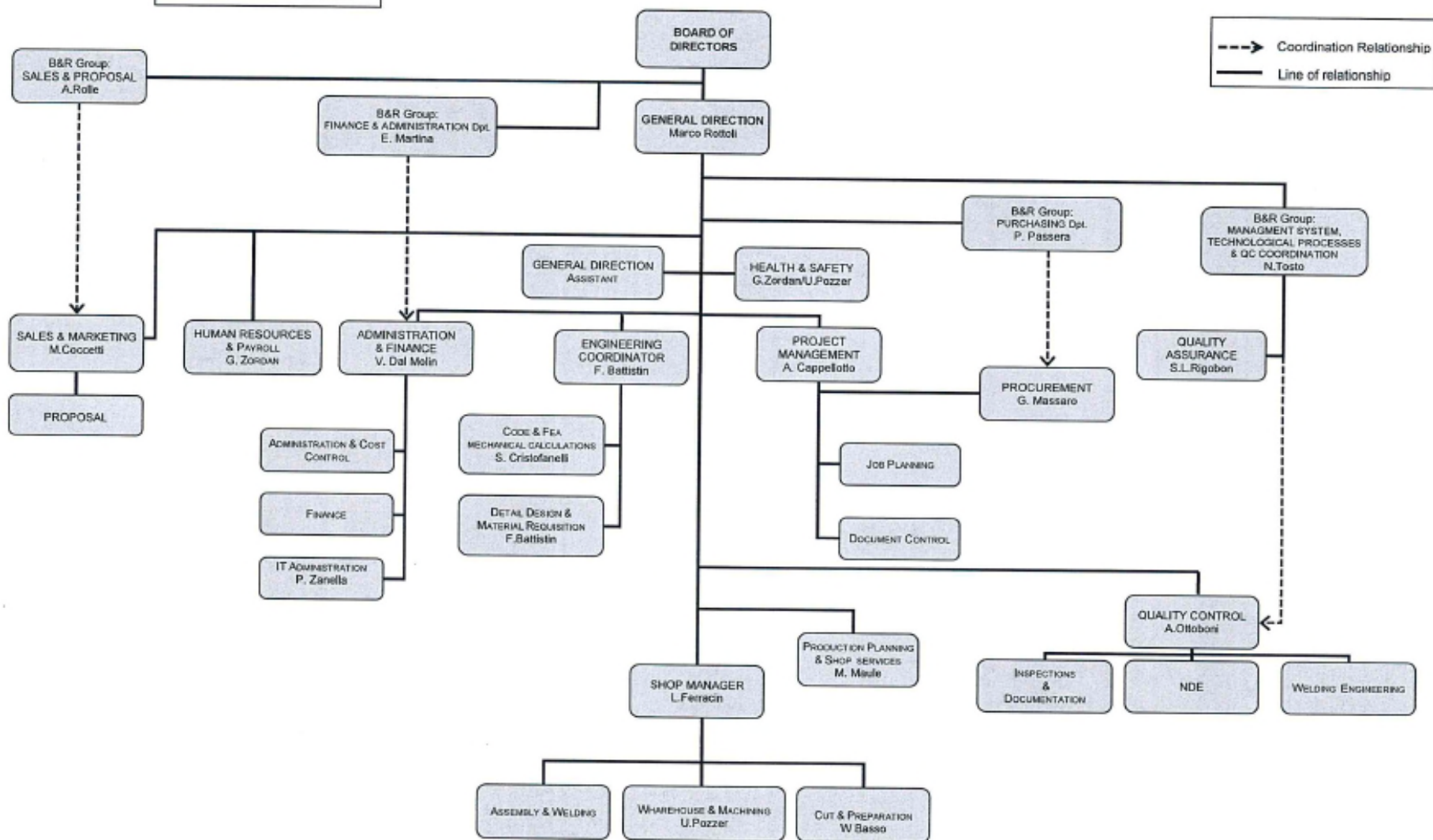
- **ASME U** stamp
- **ASME U2** stamp
- **ASME S** stamp
- **ASME R** stamp
- **MSTAMP**
- **TUV**
- **OTHERS**





Zanon Pressure Equipment S.r.L.  
Via Vicenza, 113  
36015 Schio (VI) - Italy

# ORGANIZATION CHART



Date : 02/09/2019

GENERAL DIRECTOR (MARCO ROTTOLI)

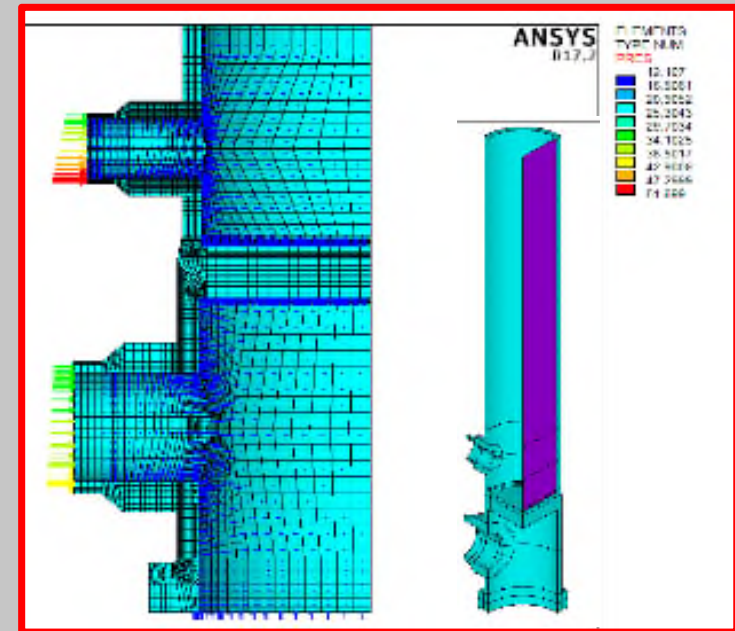




# DESIGN CAPABILITIES

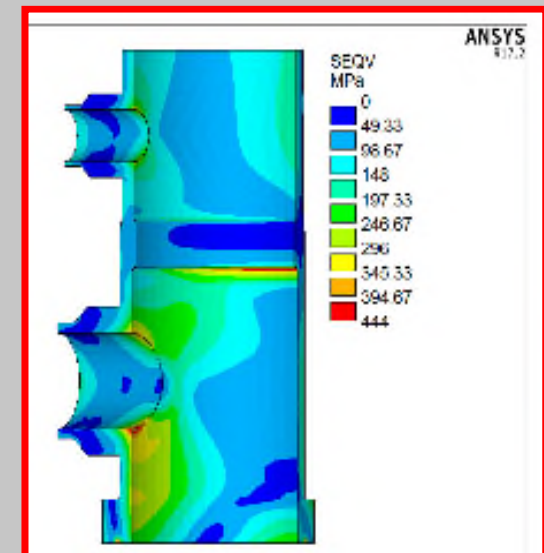
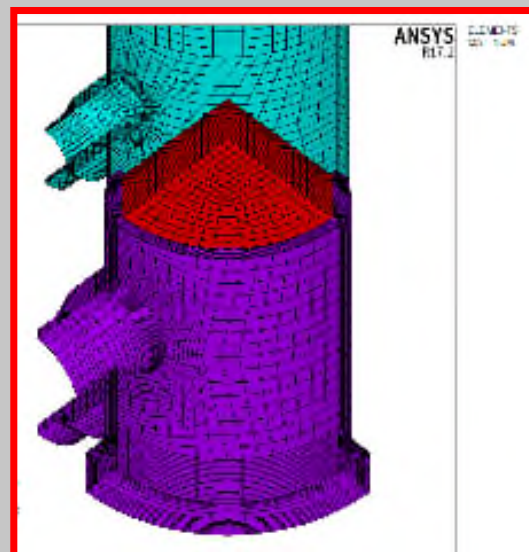
The EZ's Technical Office  
is in position to develop:

- Structural calculations according to international codes: **ASME, BS, AD Merkblätter, CODAP, TEMA, EN 13445** (Design by formulas)



- **Stress analysis**

- **Thermal design**





# ***FACTORY***



**The Company extends in an area of 35,000 sq. meters (approx. 15,000 covered)**

**One bay of our workshop of approximately 1500 sq. meters is completely dedicated to the white material.**

**Our Maximum crane lifting capability is 250 tons (one piece).**

**Heat Treatment Furnace  
remotely controlled, dimensions  
6x6x18 m**



# ***YARD WITH DIRECT ACCESS TO THE SEA***



**In case of equipment exceeding  
250 t in weight, fabrication  
and/or final assembly can be  
carried out in a fully equipped  
yard in Marghera with direct  
access to the sea.**

**The Marghera workshop belongs  
to Brembana & Rolle Group of  
Companies**

**The combination of our  
historical know-how and  
expertise with this increased  
fabrication capacity will bring an  
added value to our esteemed  
Clients.**



# TYPICAL PRODUCTS

- **Heat exchangers**
- **Reactors**
- **Columns/Towers**
- **Proprietary Equipment**



## Materials we can work with:

- **CS and Low alloy steel (Gr.11 Gr.22)**
- **High alloy steel (all kinds of SS, Duplex and Supeduplex)**
- **Nickel and relevant alloys (Inconel, Incoloy, Monel, Hastelloy)**
- **Titanium**
- **Zirconium**
- **Tantalum and Niobium**





*In few words...*

we can assist in the best way  
with equipment having:

- ***High pressure***  
and / or
- ***Special materials***



# *CLIENTS (selected list)*

## Final Users

AGIP  
AGRIUM  
ARKEMA  
AMOCO  
BALZERS AG  
BASELL  
BASF AG  
BAYER AG  
BP AMOCO  
CF INDUSTRIES  
CIBA GEIGY  
COFFEYVILLE RESOURCES  
DOW CHEMICAL  
EGYPTIAN PETROCHEMICAL  
ENI  
ERG / ISAB  
EXXON MOBIL  
FAUJI FERTILIZER  
GRUPA LOTOS  
HANWA CHEM.  
HOECHST AG.  
INOVYL  
INEOS

KNPC  
KOCH  
LONZA / POLYNT  
MAERSK  
NIZHNEKAMSK NEFTEKHIM  
NESTE  
PETROBRAS  
PIDMCO  
POLIMERI EUROPA  
PCS NITROGEN  
QAFCO  
RAZI PETROCHEMICAL  
SABIC  
SAFCO  
SARAS  
SAUDI ARAMCO  
SOCAR  
SOLVAY  
STATOIL/EQUINOR  
TERRA NITROGEN  
TOTAL  
US NITROGEN  
YARA  
YEMENGAS

## Contractors

AIBEL  
AIR LIQUIDE / LURGI  
AKER KVAERNER  
ANSALDO GROUP  
CASALE  
BECHTEL  
EUROTECNICA  
FLUOR  
FOSTER WHEELER GROUP  
HALDOR TOPSOE  
JACOBS  
KBR  
MITSUI ENGINEERING  
PETROBEL  
SAIPEM  
SAMSUNG  
SINOPEC  
SNAMPROGETTI  
THYSSENKRUPP UHDE  
TECHNIP / STONE & WEBSTER  
TECNICAS REUNIDAS  
TECNIMONT  
WARTSILA  
WEATHERLY



# *State of the Art Metallurgical and Welding Technologies*

Great experience in equipment for:

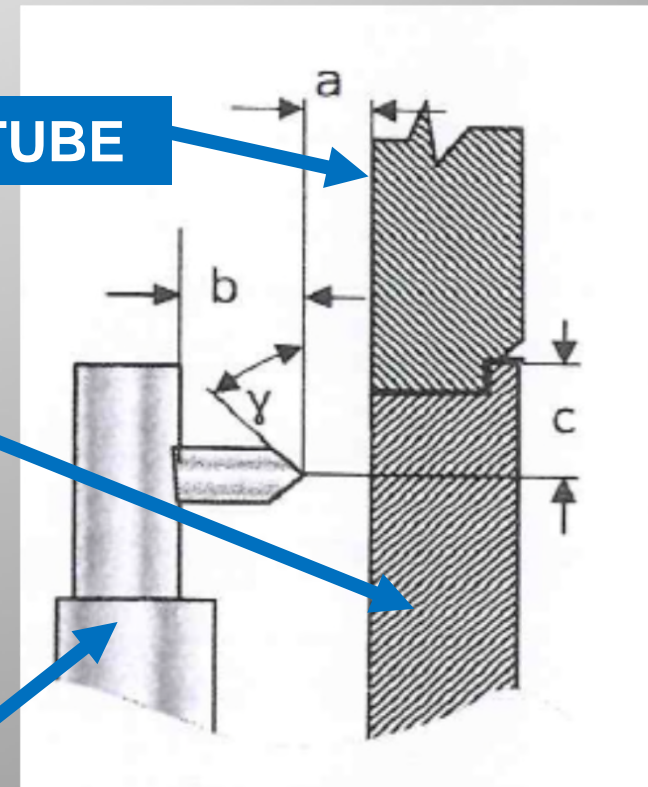
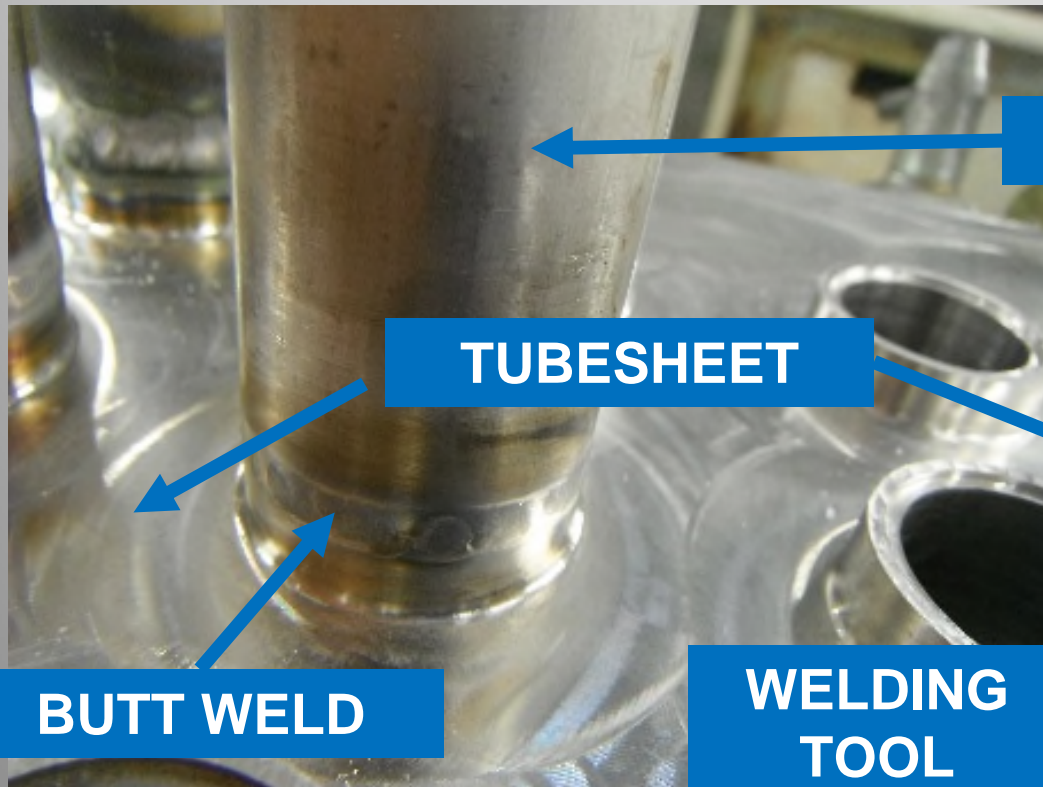
- high corrosive environments
- high temperatures

when special materials/heat treatments and special welding technologies are required



**IBW**

We are also specialized in Inner Bore Welding (IBW) Technology for Tube To Tube Sheet Joints in S&T Heat Exchanger







*A FEW EXAMPLES OF  
OUR PRODUCTION  
OVER THE LAST YEARS*



## N. 8 AGR AMINE REBOILERS

**YEAR:** 2017

**CUSTOMER:** TECNICAS REUNIDAS for  
SAUDI ARAMCO

**PROJECT:** FADHILI GAS PROGRAM  
KSA - REFINERY

### MAIN TECHNICAL DATA

|            |   |
|------------|---|
| DIMENSIONS | 2745/1855x11040                           |
| WEIGHT     | 41 ton                                    |
| MATERIAL   | AISI 316L                                 |
| REF. CODE  | ASME VIII div.1<br>Tema R + ASME<br>Stamp |





# *N° 9 NITRIC ACID PLANT EXCHANGERS*

**YEAR:** 2019

**CUSTOMER:** Yara

**PROJECT:** Australia – Nitric Acid







# *N° 4 OFFSHORE EXCHANGERS*

**YEAR:** 2019

**CUSTOMER:** Aibel/Equinor (Statoil)

**PROJECT:** Norway

## **MAIN TECHNICAL DATA**

|           |                              |
|-----------|------------------------------|
| DIMENSION | Various                      |
| WEIGHT    | Various                      |
| MATERIAL  | Titanium Tubes               |
| REF. CODE | ASME VIII DIV. 1<br>+ TEMA R |







# *LP DISCHARGE COOLER*

**YEAR:** 2019

**CUSTOMER:** MAERSK

**PLANT:** OFFSHORE



## **MAIN TECHNICAL DATA**

|           |                     |
|-----------|---------------------|
| DIMENSION | 7950L x 1410ID      |
| WEIGHT    | 20 ton              |
| MATERIAL  | SuperDuplex         |
| REF. CODE | PD 5500 +<br>TEMA R |



# *HP SEPARATOR*

**YEAR:** 2015

**CUSTOMER:** NESTE

**PLANT:** REFINERY





# *Reactor Effluent + CLPS Liquid Exch.*

**CUSTOMER:** Saipem

**PROJECT:** Taranto Refinery



| MAIN TECHNICAL DATA |                                      |
|---------------------|--------------------------------------|
| DIMENSIONS          | 1200 x 14500                         |
| WEIGHT              | 70 tons/each                         |
| MATERIAL            | Gr 22 + 347 WOC<br>Tubes Incoloy 825 |
| REF. CODE           | EN 13445<br>Tema «R»                 |





# COMPRESSOR DISCHARGE COOLER

**YEAR:** 2007

**CUSTOMER:** YEMENGAS

**PLANT:** LNG PLANT



## MAIN TECHNICAL DATA

|           |   |
|-----------|---|
| DIMENSION | 9945L x 1870ID                            |
| WEIGHT    | 44,5 ton.                                 |
| MATERIAL  | SA 516 Gr.70 +<br>SB 338 Gr.2             |
| REF. CODE | ASME VIII DIV.<br>1 + TEMA R +<br>API 660 |





# *N° 2 Effluent Treat Gas Exchangers*

**YEAR:** 2015

**CUSTOMER:** EXXON MOBIL

**PLANT:** REFINERY



## **MAIN TECHNICAL DATA**

|            |                 |
|------------|-----------------|
| DIMENSIONS | 4640x570        |
| WEIGHT     | 17 ton          |
| MATERIAL   | 1 ¼ Cr – ½ Mo   |
| REF. CODE  | ASME VIII div.2 |



# *HDS REACTOR*

**CUSTOMER: ENI**

**PROJECT: TARANTO REFINERY**

## **MAIN TECHNICAL DATA**

|            |                                |
|------------|--------------------------------|
| DIMENSIONS | 4500 x 18175                   |
| WEIGHT     | 270 tons                       |
| MATERIAL   | Low Alloy (Gr.11) +<br>347 WOC |
| REF. CODE  | ASME                           |





# PHOSGENE REACTOR

**YEAR:** 2016

**CUSTOMER:** SLIC / BASF

**PROJECT:** Isocyanate Plant Shanghai

## MAIN TECHNICAL DATA

|           |   |
|-----------|---|
| DIMENSION | ID4950 x L7000                                  |
| WEIGHT    | 177000 Kg                                       |
| MATERIAL  | CS / DSS  |
| REF. CODE | ASME VIII DIV. 1 +<br>TEMA R + China<br>License |







# *OXYCHLORINATION REACTOR*

**YEAR:** 2012

**CUSTOMER:** SOLVAY

| MAIN TECHNICAL DATA |                        |
|---------------------|------------------------|
| MATERIAL            | mainly SS 304L and C22 |
| REF. CODE           | ASME VIII Div. 1       |





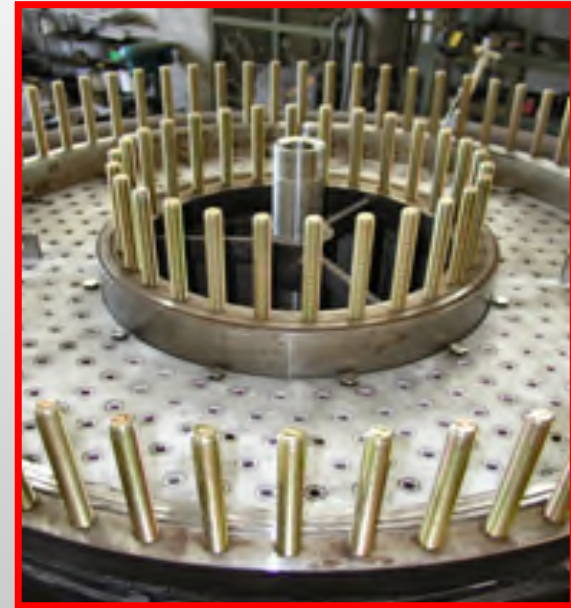


# MELAMINE REACTOR

**YEAR:** 2018

**CUSTOMER:** EUROTECNICA

**PROJECT:** MELAMINE PLANT



## MAIN TECHNICAL DATA

|           |                                   |
|-----------|-----------------------------------|
| DIMENSION | 8200L x 1500ID.                   |
| WEIGHT    | 91 ton.                           |
| MATERIAL  | LOW ALLOY<br>STEEL + HC276<br>WOC |
| REF. CODE | ASME VIII Div.1                   |



# OXO REACTOR

**YEAR:** 2008

**CUSTOMER:** EXXON MOBIL

**PROJECT:** SPT PLANT SINGAPORE

| MAIN TECHNICAL DATA |                                 |
|---------------------|---------------------------------|
| DIMENSION           | 1500x 22000mm                   |
| WEIGHT              | 190 ton                         |
| MATERIAL            | Micro alloy + WOC<br>316+Duplex |
| REF. CODE           | PD 5500                         |





## *N° 4 OLEFLEX REACTORS*

**CUSTOMER:** LURGI/BASF

**PROJECT:** PDH Tarragona

### MAIN TECHNICAL DATA

|           |                   |
|-----------|-------------------|
| DIMENSION | 1200/3400 x 25000 |
| WEIGHT    | 70 tons/each      |
| MATERIAL  | 304 H             |
| REF. CODE | ASME VIII Div. 1  |





# *FEED PREHEATER EXCHANGER*

**YEAR:** 2018

**CUSTOMER:** AIR LIQUIDE / LURGI

**PROJECT:** METHANOL PLANT  
Beaumont, TX

## MAIN TECHNICAL DATA

|           |                                 |
|-----------|---------------------------------|
| DIMENSION | 13700L x 2120D                  |
| WEIGHT    | 99 ton                          |
| MATERIAL  | SA 387 Gr.11                    |
| REF. CODE | ASME VIII DIV.1 +<br>ASME stamp |







# CARBAMATE CONDENSER

**YEAR:** 2017

**CUSTOMER:** CASALE S.A.

**PLANT:** CF Terra Int. Canada

## MAIN TECHNICAL DATA

|           |   |
|-----------|---|
| DIMENSION | Ø1800/1430 mm x 14490 mm                      |
| WEIGHT    | 41000 kg                                      |
| MATERIAL  | Carbon Steel / CS+S31050 / S31050             |
| REF. CODE | ASME VIII Div.1 + ASME VIII Div.2 +<br>TEMA R |







# Synthesis Loop Waste Heat Boiler

**YEAR:** 2017

**CUSTOMER:** THYSSEN-KRUPP UHDE

**PROJECT:** SAFCO IV, Saudi Arabia

## MAIN TECHNICAL DATA

|           |                               |
|-----------|-------------------------------|
| DIMENSION | Ø1670/1480xlg.12750           |
| WEIGHT    | 67000 Kg                      |
| MATERIAL  | MicroAlloy/LowAlloy<br>(Gr22) |
| REF. CODE | AD 2000                       |





## *Ammonia Converter Basket (typical)*







# WASTE HEAT BOILER

**YEAR:** 2012

**CUSTOMER:** AMMONIA CASALE S.A.

**PLANT:** 1425 MTD Synthesis Project



## MAIN TECHNICAL DATA

|           |   |
|-----------|---|
| DIMENSION | Ø1980 mm x 9890 mm  |
| WEIGHT    | 55000 kg  |
| MATERIAL  | Special Grade<br>Carbon Steel / Cr-<br>Mo Low Alloy / Cr-<br>Mo Low Alloy |
| REF. CODE | ASME VIII Div.2 +<br>GB 150   |



# AMMONIA CONVERTER

**YEAR:** 2011

**CUSTOMER:** UHDE

**PROJECT:** AMMONIA PLANT

| MAIN TECHNICAL DATA |                 |
|---------------------|-----------------|
| DIMENSION           | 13000LX2500 ID  |
| WEIGHT              | 205000Kg        |
| MATERIAL            | SA-508 Gr3 Cl 2 |
| REF. CODE           | ASME VIII DIV.2 |







# ***BFW PREHEATER***

**YEAR:** 2005

**CUSTOMER:** FAUJI FERTILIZER COMPANY

**PROJECT:** AMMONIA PLANT- PAKISTAN



## **MAIN TECHNICAL DATA**

|           |                                   |
|-----------|-----------------------------------|
| DIMENSION | 6500L x 835ID                     |
| WEIGHT    | 19 ton.                           |
| MATERIAL  | SA 387 Gr.12<br>Cl.2              |
| REF. CODE | ASME Sect. VIII<br>DIV.1 + TEMA R |



**THANK YOU FOR  
YOUR  
ATTENTION**